

# Why Choose Regency?

At Regency, our past 40 years have been focused on providing a high-level of service while building high-quality and reliable products that our customers can enjoy for years to come.

## HIGH-QUALITY

Producing a high-quality product has been at the very heart of what we do; from when that very first stove rolled off the production line over 40 years ago to today. We are ever-focused on producing quality products for our customers that will last for years to come.

## BEST WARRANTY

A fireplace should be reliable and should work right the first time it is used, and the 1,000<sup>th</sup>. A core part of our business is making sure that we are building long-lasting, durable, high-quality products. We back-up that commitment with the industry's best warranty on all our products.

## COST-EFFICIENT

Never before have home heating costs been higher. Turn your furnace way down and zone heat with our beautiful, reliable and convenient Regency products. Not only can you cut your fuel bills in half, but you'll be able to enjoy the timeless comfort of a Regency fire.

## Why Regency? Because it's more than a fireplace!

# Burning Wood - a Green Choice



## **WOOD IS AFFORDABLE**

Reduce your dependence on high priced, non-renewable home heating fuels by burning wood. Turn your fire down and enjoy comforting warmth in your main living area with a Regency wood product. Whether you buy your wood or collect it yourself, you will notice the savings within its first year.

## **RENEWABLE RESOURCE**

Wood is a renewable natural resource - well-managed forests are a renewable, sustainable source of energy that helps us reduce greenhouse gas emissions and be less dependent on oil & gas.

## **WOOD IS CARBON NEUTRAL**

As trees grow they absorb carbon dioxide from the atmosphere. When trees die and are left to decompose in the forest or burn in forest fires the carbon stored in the trees is released in the atmosphere as carbon dioxide. Burning firewood produces the same amount of carbon dioxide as it has absorbed during its life cycle - making wood burning carbon neutral.

## **CERTIFIED**

All Regency Wood Stoves and Fireplaces have been tested and certified to the strictest Australian Clean Air Standards.



Narrabri wood fire.

## Narrabri® | Wood Fire

The Narrabri is a perfect fit for smaller rooms providing heat that fully adjustable with the easy to use, single rod draft control. With a steel firebox and quality firebrick lining, this heater will provide your home with warmth for years to come.

### STANDARD FEATURES

- Heats approx. 80 - 120 sq.m\*
- Glass viewing area (340 x 250mm)
- Single rod draft control
- Strong bakelite handles
- Steel firebox with firebrick lining
- Airwash system
- Adjustable leg bolts for levelling on uneven surfaces
- Emissions: 1.4 g/kg



Cardinia wood fire.

## Cardinia® | Wood Fire

Designed to heat small to medium sized living areas, the simple modern lines of the Cardinia suit a wide range of decors. This radiant heater boasts several features, including: a large glass viewing area, the ability to heat approximately 150-170 sq.m\*, and front-to-back or side-to-side log placement.

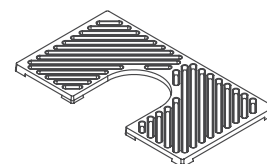
### STANDARD FEATURES

- Heats approx. 150-170 sq.m\*
- Large glass viewing area (458 x 260mm)
- Single rod draft control
- Strong bakelite handles
- Steel firebox with firebrick lining
- Airwash system
- Low emissions: 0.5 g/kg

### OPTIONS

- Steel baffle
- Cast iron liners
- Cast iron cook top

Cardinia cast cook top



*\* Varies depending on home floor plan, house layout, heat loss of the house and quality/moisture content of wood.*



Renmark wood fire.

## Renmark® | Wood Fire

Its contemporary design and large viewing area sets the Renmark apart from traditional freestanding wood fires. This convection heater, with optional 2-speed fan, is designed for medium sized living areas and can easily heat approximately 170-200 sq.m.

### STANDARD FEATURES

- Heats approx. 170-200 sq.m\*
- Large glass viewing area (458 x 260mm)
- Single rod draft control
- Strong bakelite handles
- Steel firebox with firebrick lining
- Airwash system
- Low emissions: 0.5 g/kg

### OPTIONS

- 2-speed thermostatically controlled fan
- Steel baffle
- Cast iron liners



Alterra wood fire.

## Alterra® | Wood Fire

A wood burning stove with modern appeal! The contemporary design of Regency's Alterra wood stove puts the focus on the brilliant glowing fire. With an impressive viewing area, and a convenient firewood storage area, the Alterra is perfectly proportioned for visual pleasure and functional convenience.

### STANDARD FEATURES

- Heats approx. 190 - 240 sq.m\*
- Large glass viewing area (461 x 260mm)
- Single rod draft control
- Strong bakelite handles
- Steel firebox with firebrick lining
- Airwash system
- 2-speed thermostatically controlled fan
- Low emissions: 0.5 g/kg
- Black side panels

### OPTIONS

- Stainless steel side panels
- Steel baffle
- Cast iron liners

*\* Varies depending on home floor plan, house layout, heat loss of the house and quality/moisture content of wood.*



Albany wood fire.

## Albany® | Wood Fire

The Albany sets the standard for the industry's most reliable, well-constructed freestanding wood fire; providing beautiful wood heat to an average living area of 190-240 sq.m\*. Load wood front-to-back or side-to-side for optimum convenience, then sit back and enjoy the warmth.

### STANDARD FEATURES

- Heats approx. 190 - 240 sq.m\*
- Large glass viewing area (458 x 260mm)
- Single rod draft control
- Strong bakelite handles
- Steel firebox with cast iron lining
- 8mm steel baffle
- Airwash system
- Powerful 3-speed thermostatically controlled fan
- Low emissions: 0.5 g/kg



Hume wood fire.

## Hume | Wood Fire

The Hume provides a dramatic wide glass view of an incredible fire while warming larger living areas. The firebox is specially designed to maximize heat output and is fitted with a 3-speed fan for extra circulation. The resulting heating capacity is an area of approximately 300 sq.m.\*

### STANDARD FEATURES

- Heats approx. 300 sq.m\*
- Large glass viewing area (577 x 277mm)
- Single rod draft control
- Strong bakelite handles
- Steel firebox with cast iron lining & a firebrick base
- 8mm steel baffle
- Airwash system
- Powerful 3-speed fan
- Low emissions: 1.5 g/kg

*\* Varies depending on home floor plan, house layout, heat loss of the house and quality/moisture content of wood.*



Gosford wood fire.

## Gosford | Wood Fire

Impressive in size and performance, the Gosford delivers incredible high efficiency heat for maximum comfort. The sleek styling is complemented by Regency's tradition of reliability and leading edge wood burning technology. The Gosford produces more heat using less wood by extending the burn.

### STANDARD FEATURES

- Heats approx. 300 - 350 sq.m\*
- Large glass viewing area (576 x 275mm)
- Single rod draft control
- Strong bakelite handles
- Steel firebox with firebricks lining the base
- Cast iron liners
- 8mm steel baffle
- Airwash system
- Powerful 3-speed fan
- Low emissions: 1.5 g/kg



Kingston wood fire.

## Kingston | Large Hybrid Catalytic Wood Fire

The Regency Kingston Wood Freestanding lets you enjoy the impressive heat performance of Regency's largest wood fire with today's clean modern styling. This catalytic wood fire delivers both function and style that feature sleek lines, a contemporary door design and large clean viewing area of a roaring wood fire.

### STANDARD FEATURES

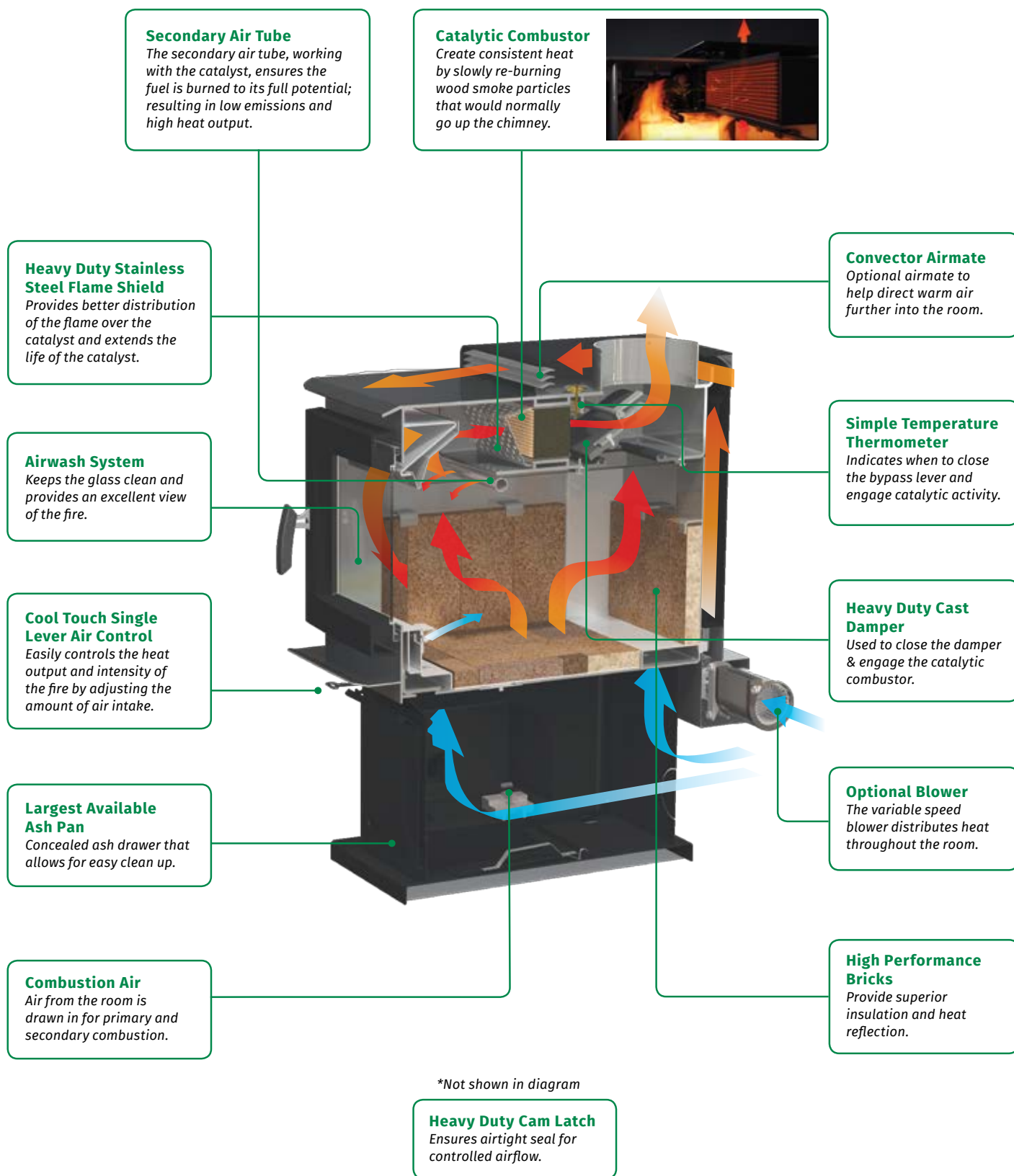
- Catalytic Stove with Eco-Boost Technology
- Single lever bypass control to engage catalyst
- Single-lever air control
- Steel firebox with firebrick lining
- Rear heat deflector to reduce clearances
- Airwash system helps keep the glass clean
- Discreet ashlip
- Contemporary cast iron door
- 170° opening door for easy loading
- Easy to read thermometer
- Emissions: 0.4 g/kg
- Efficiency: 65%

### OPTIONS

- Extra large ash drawer with cover
- 2-speed thermostatically controlled fan
- Convector airmate
- Outside air-kit

*\* Length of burn time and output depend upon wood species used, moisture content of wood, elevation, climate conditions and installation.*

# Eco-Boost Technology



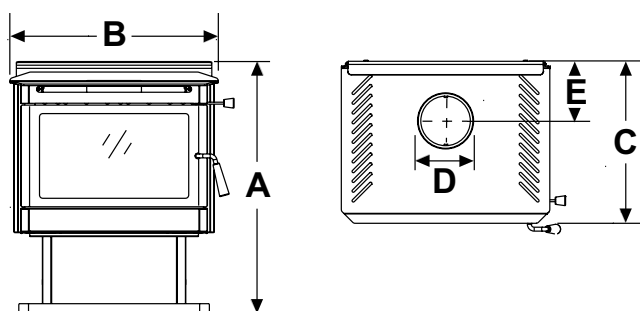
# Specifications (mm)

Specifications	Narrabri	Cardinia	Renmark	Alterra	Albany	Hume	Gosford	Kingston
Heating capacity	120m <sup>2</sup>	170m <sup>2</sup>	200m <sup>2</sup>	240m <sup>2</sup>	240m <sup>2</sup>	300m <sup>2</sup>	350m <sup>2</sup>	200m <sup>2</sup> - 230m <sup>2</sup>
Efficiency	67%	69%	69%	70%	70%	65%	65%	65%
Emissions (g/kg)	1.4	0.5	0.5	0.5	0.5	1.5	1.5	0.4
Average heat output (kW)	7.8	10	11 No fan: 10	11	11	13	13	9.7

Where fitted thermostatically controlled fans do not activate until fire heats up and may take 20-30 mins.

NOTE: Heating capacity and any burn times are a guide only and can be affected by some or all of the following examples: drafts under doorways or between floorboards, large glass areas not covered by heavy drapes/curtains, green, wet or damp wood, ceiling heights greater than 2.4 metres or cathedral type ceilings, poor or no insulation.

This is a guide - specifications based on the current model at time of publishing. Always refer to the data plate for unit specific details.

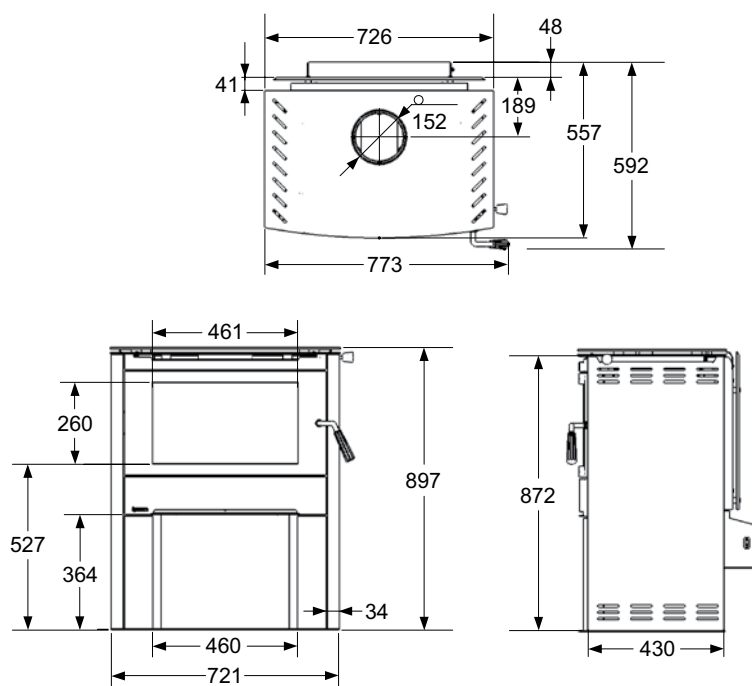


Dimensions	A*	B	C**	D	E
Cardinia	692	585	463	152	180
Renmark	712	640	497	152	183
Albany	792	688	482	152	194
Hume	859	769	539	152	170
Gosford	902	794	570	152	167
Kingston	914	660	768	152	225

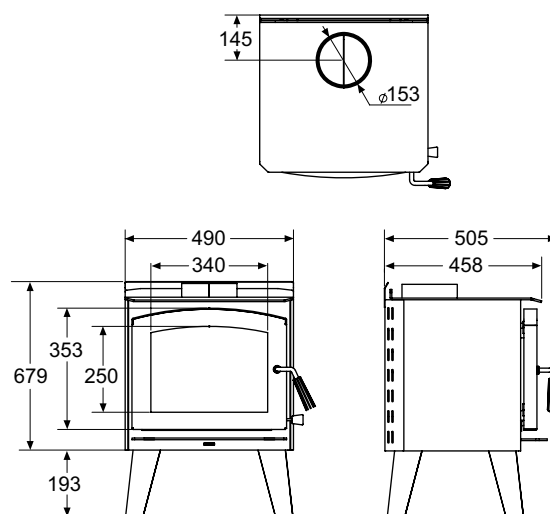
\*Measured to top of flue collar for height (Kingston, Gosford)

\*\*Including Ash Lip (Kingston)

## ALTERRA

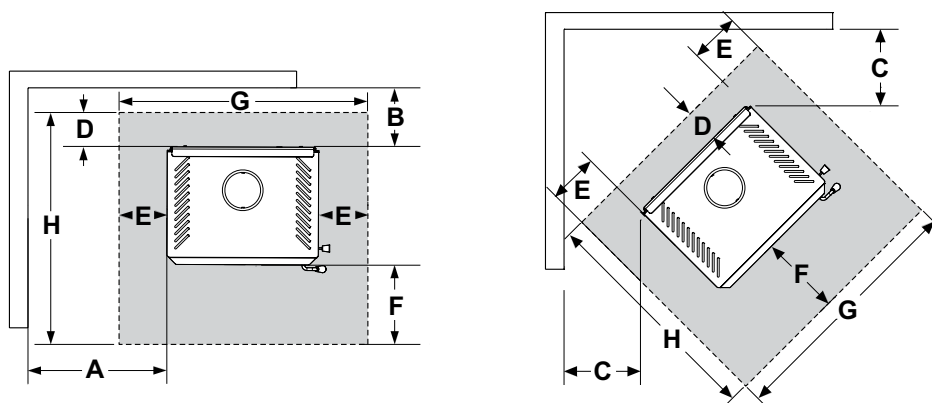


## NARRABRI



# Specifications (mm)

## CLEARANCES TO COMBUSTIBLE MATERIALS



Residential Installation			A	B	C	D	E	F	G	H
Narrabri	Standard Default Kit (3)		480	200	300	200	200	300	850	950
Cardinia	Standard Default Kit (1)		700	225	450	192	147	450	880	1105
	AHD Special Kit		750	250	450	192	147	450	880	1105
Renmark	Standard Default Kit (1)		400	100	175	100	120	350	880	914
	AHD Special Kit		450	100	175	100	120	350	880	914
Alterra	Standard Default Kit (1)		475	160	175	160	78	300	875	969
	AHD Special Kit		475	160	175	160	78	300	875	969
Albany	Standard Default Kit (1)		400	100	75	100	96	350	880	932
	AHD Special Kit		400	100	125	100	96	350	880	932
Hume	Standard Default Kit (2)		400	180	200	181	123	400	1015	1120
	AHD Special Kit		450	300	200	181	123	400	1015	1120
Gosford	Standard Default Kit (2)		390	160	200	160	123	380	1015	1080
	AHD Special Kit	Refer to Manual	420	220	200	220	123	380	1015	1140
Kingston		with AirMate or Rear Deflector	250	150	100	12	200	300	1060	1000

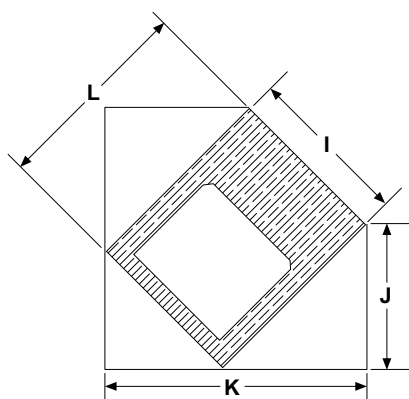
Note (1) Standard Default Kit used for clearances includes 1 x 900 mm length of 130° stainless between active flue and 2 lengths of decromesh.

Note (2) Standard Default Kit only required includes 2 lengths of decromesh.

Note (3) B clearance can be reduced to 125 mm by the addition of 1 x 900 mm x 180° stainless shield fitted and spaced between the active flue and the decromesh.

This is a guide - always refer to installation manual for specifications.

## CORNER HEARTH MEASUREMENTS



Dimensions	I	J	K	L
Narrabri	760	690	1290	758
Cardinia	585	990	1615	1167
Renmark	914	665	1288	1340
Alterra	882	710	1335	1017
Albany	880	657	1280	932
Hume	1015	795	1510	2000
Gosford	1040	770	1490	1230
Kingston	1060	707	1456	933

# Industry's Best Warranty



## ENJOY YOUR REGENCY — FOR LIFE

You'll be happy with your Regency for years to come, our 15 years Limited Warranty guarantees it. Not only have we invested in quality workmanship, the finest materials and durable heavy-duty construction but we have carefully selected a dealer network that is committed to your satisfaction. All Regency wood fires pass stringent Australian testing standards. We know that you will be as proud of your Regency as we are.



*NOTE: All product specifications are subject to change without notice. Before installing refer to the relevant product manual for full and up to date information. Heating capabilities of units are affected by: drafts under doorways or through flooring, large glass areas not covered by heavy drapes, ceiling heights greater than 2.4m or cathedral type ceilings, poor or no insulation and geographical locations.*



for your nearest dealer visit:  
**regency-fire.com.au**  
or call 1 800 081 978

**Fireplace Products Australia Pty Ltd.**  
1 Conquest Way, Hallam VIC 3803  
Australia  
**Phone:** 1 800 081 978  
**Fax:** 03 9799 7822  
**Email:** sales@regency-fire.com.au

**Distributor WA**  
**Air Group Australia**  
28 Division St.  
Welshpool WA 6106  
Australia  
**Phone:** 08 9350 2200

*Disclaimer: Appearance of flames varies with installation and fuel type.*

©2020 FPI Fireplace Products International Ltd. Regency®, Albany®, Alterra®, Bellerive®, Berwick®, Cardinia®, Narrabri®, and Renmark® are the registered and/or proprietary trademarks of FPI Fireplace Products International Ltd. All rights reserved. (03/20)  
Part no. 944-296

*Your Regency Dealer*

  
**Total  
Kooling  
Solutions**  
*The Air Conditioning Specialists*

**63B Dixon Road, Rockingham WA 6168**  
**08 9592 3343**  
**info@totalkoolingsolutions.com.au**